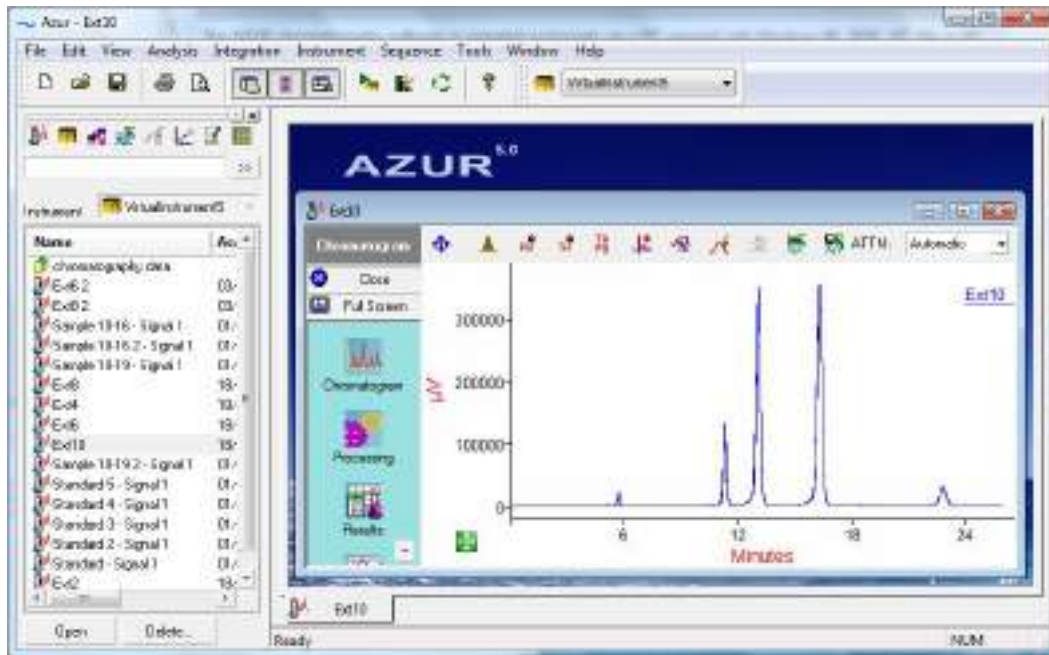


Data: 01/05/2017

Data System



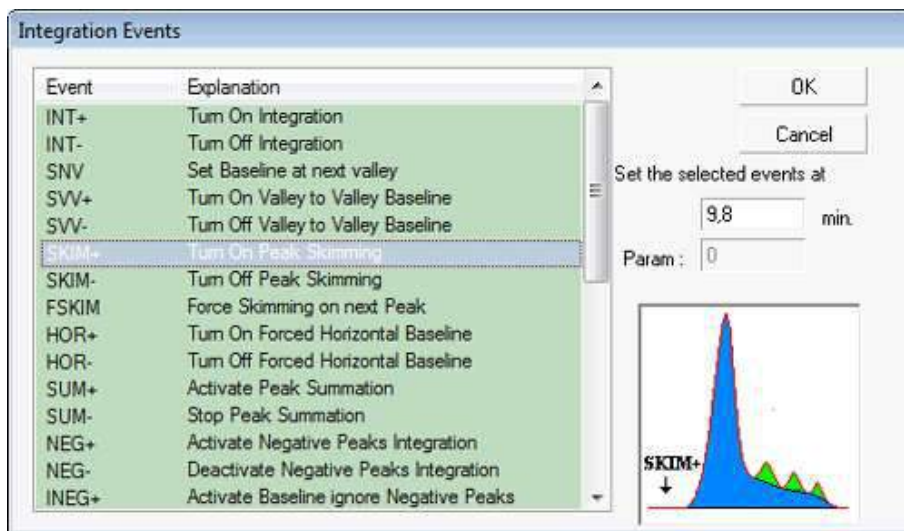
Chromatography Data System

La nuova generazione di sistemi per l'acquisizione ed il trattamento dei dati cromatografici. Compatibile con tutti i GC ed HPLC presenti sul mercato, offre la più moderna tecnologia software con un'interfaccia utente estremamente semplice ad un prezzo imbattibile. Può essere installato sia su computer desktop che su portatili, grazie al suo dispositivo di acquisizione USB a 24 bit, ad 1, 2 e 4 canali completamente indipendenti e campionamento dati fino a 400 punti al secondo

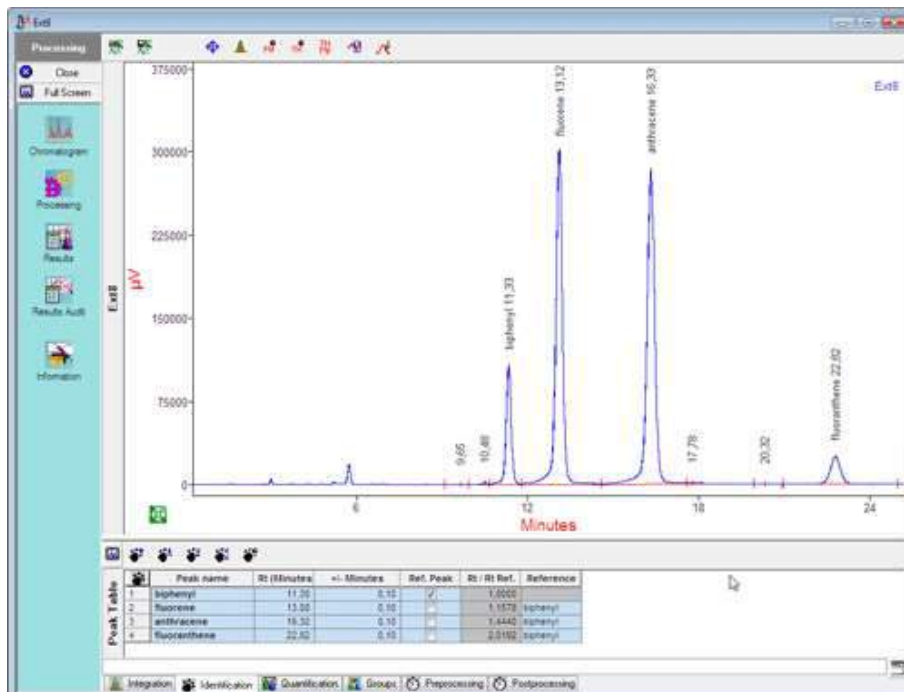
Configurazione dei cromatografi

Acquisizione

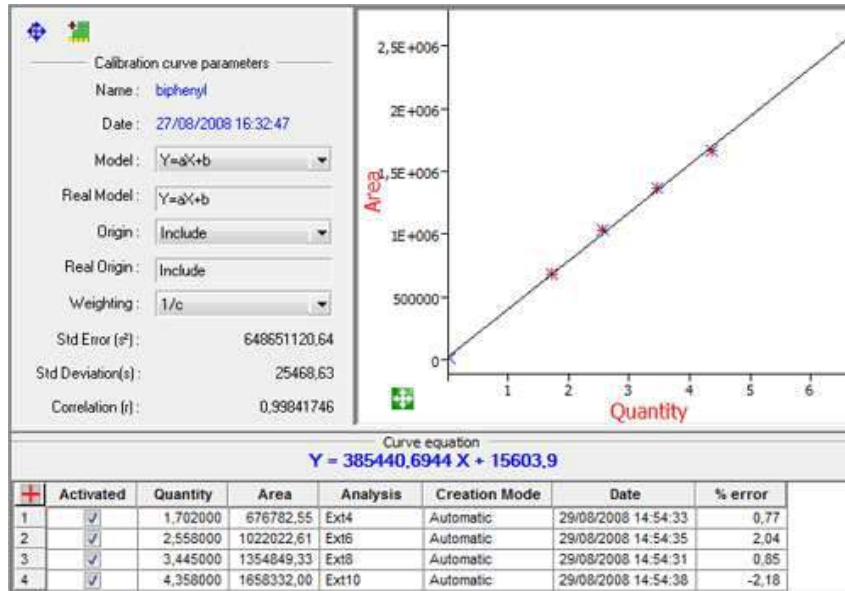
Integrazione grafica automatica o manuale



Identificazione



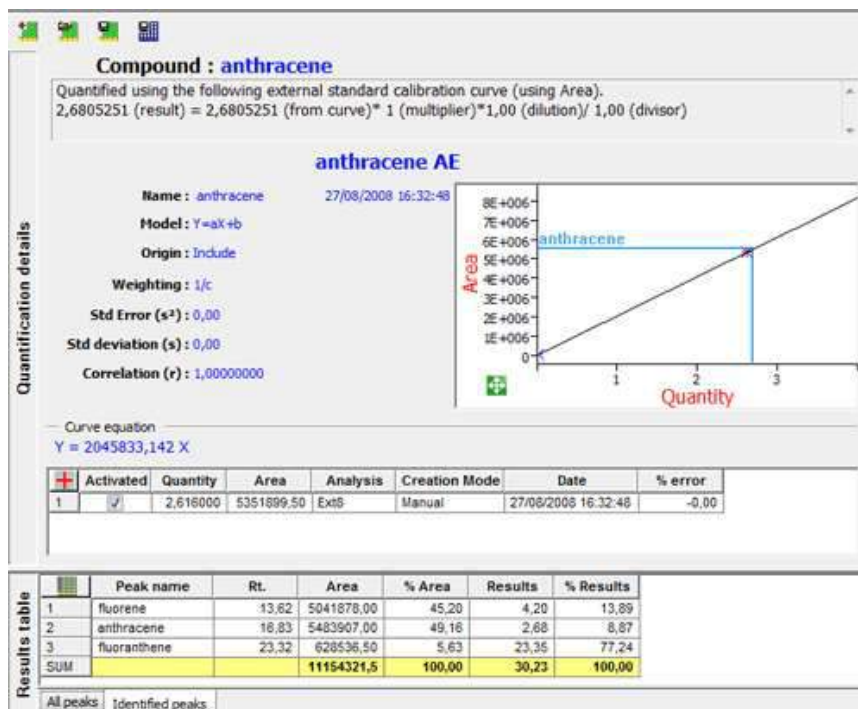
Quantificazione



Riprocessamento

Analysis	Process Method	Quantification Mode	Level	Calib. upd.	Rt. upd.	Informatic	Amount	Vol.	Dilution	Division
1	Ext4	Demo Process	External Std. (5)	Level 1	Add	✓	1	1	1	1
2	Ext4	Demo Process	External Std. (5)	Level 2	Replace	✓	2	1	2	2
3	Ext6	Demo Process	External Std. (5)	Level 3	Replace	✓	3	1	3	10
4	Ext2	Process1	External Std. (5)	Level 4	Replace	✓	4	1	2	100
5	Ext16	Process1	External Std. (5)	Level 5	Replace	✓	5	5	2	5
6	Ext8	Process1	External Std. (5)	Level 1	Replace	✓	1	1	1	1
7	Ext6	Process1	External Std. (5)	Level 3	Replace	✓	3	1	2	10
8	Ext4	Process1	External Std. (5)	Level 2	Add	✓	2	1	2	2
9	Ext2	Demo Process	External Std. (6)	Level 4	Add	✓	4	1	2	100
10	Ext2	Demo Process	External Std. (5)	Level 4	Add	✓	4	1	2	100
11	Ext16	Process1	External Std. (5)	Level 5	Add	✓	5	5	2	5

Risultati Audit



Rapporto finale

Summary Report

Sequence start time : 01/09/2008 16:27:04

Close

Full Screen

Sequence

History

Summary Report

Summary report style

One table One table per compound Statistics

In Results Table display

All Peaks Only peaks from peak table

Only identified peaks

Include internal standards

Printing information

Center Results Table Header / Footer...

Results Font : Arial 10

biphenyl fluorene anthracene fluoranthene

Analysis	Rt.	Area	% Area	Results	% Results
Avg					
Std. D	0,00	0,00	0,00	0,00	0,00
%RSD	0,00	0,00	0,00	0,00	0,00

21 CFR part 11

Users | Groups | Audit trail | Security policy

Close session after an inactivity of 0 minutes

Password change every 0 days

Password cannot be re-used before 0 days use 0 where you do not want to use this functionality

Passwords must contain at least 0 characters

Lock of the user's account after 0 successive failed log on

Submitter and reviewer must be 2 different persons

Submitter and approver must be 2 different persons

Reviewer and approver must be 2 different persons

Save changes

Rapporto di analisi personalizzato

Available elements

Report

Title (analysis name)

Free Information

Acquisition information

Sample information

Signal information

Chromatogram

Results table

Group results

Chromatographic Method

Process Method

Next page

Text file

Events

Modifications

Calibration Curve

Add >>

Remove <<

Title (analysis name)

Sample information

Results table

Chromatogram

Font

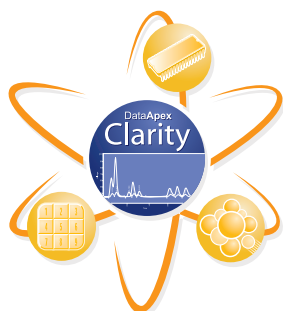
Arial 10

Left Margin

0 mm

Group the analysis generated by the same acquisition

Clarity



Chromatography Software from Chromatography Specialists

Clarity is advanced chromatography data station with software modules for data acquisition, data processing, and instrument control.

Its wide range of data acquisition interfaces (A/D converters, LAN, USB, RS232) allows connection to virtually any chromatograph.

- *Easy to install and use*
- *Direct control of chromatography instruments*
- *Modules for specific calculation and methodology*
- *Tools for regulated environment*
- *Extended user support*
- *Competitive pricing*
- *OEM versions*
- *Language localizations*

Clarity Station – simplicity and effectiveness

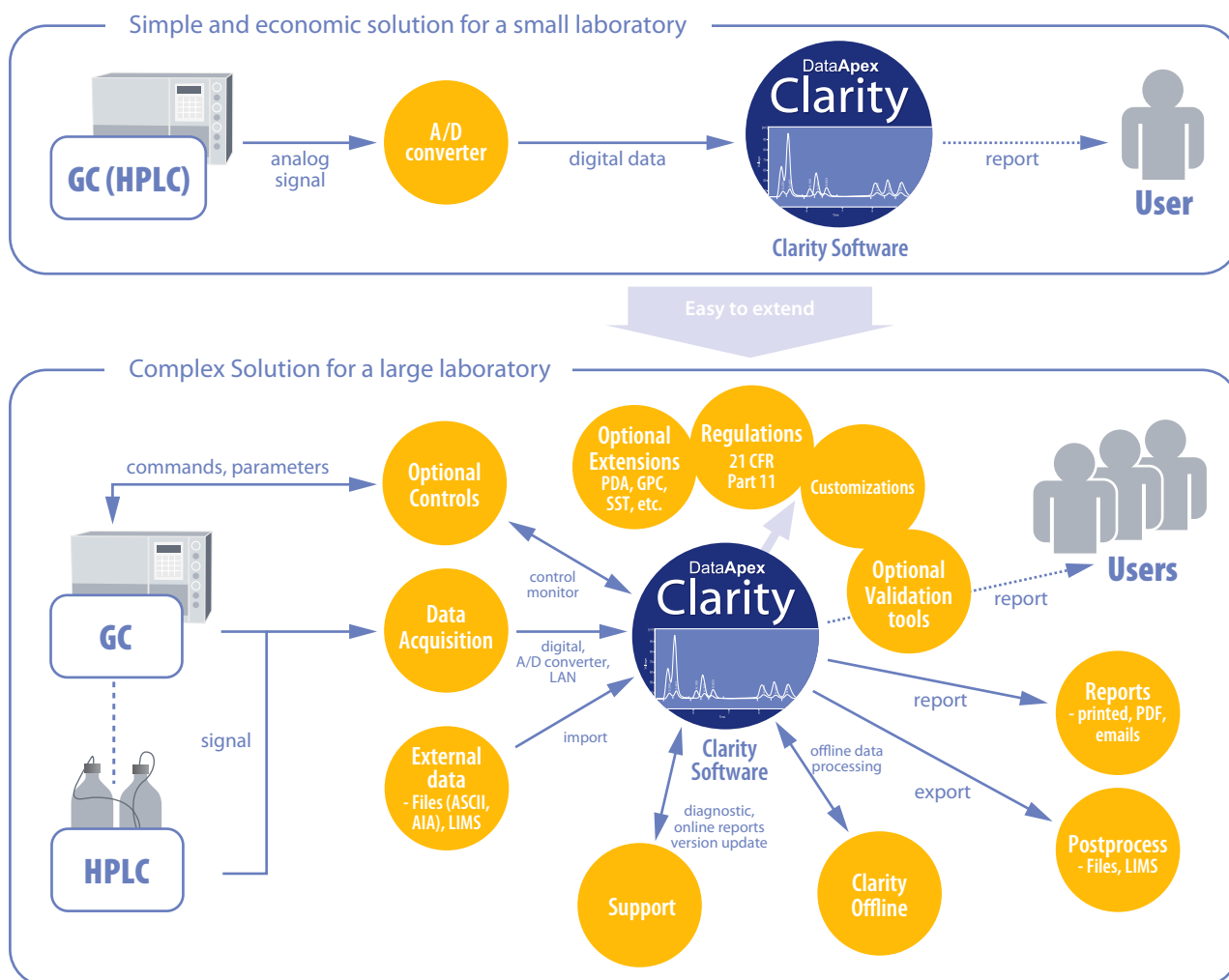
Quick start: Users can start work immediately, without extensive training. Clarity's clear structure and intuitive graphical user interface provide easy access to all frequently performed tasks.

Connectivity: Clarity can easily be integrated into the existing workflow of any laboratory. Use the Export and Import functions or LIMS to exchange data with third party software. A/D converters and control modules connect Clarity to practically any chromatograph. Digital outputs enable control of additional instruments.

Customizable user interface: Clarity can be tailored to meet specific needs. Each user may customize his/her desktop settings, format tables or even create columns for customized calculations.

Simply powerful: Behind the natural, intuitive interface are highly responsive algorithms with a curve smoothing option that enables users to detect hundreds of peaks in each chromatogram. The integration of peaks can be further fine tuned by nearly 30 integration parameters. A variety of quantification and calibration methods is incorporated in the data module.

Customizable computations: Clarity's optional extensions provide powerful features that enable implementation of specific methodologies. Clarity was developed in cooperation with its users; we understand the many and varied needs of chromatographers. Clarity meets those needs.



Clarity Station – scalability

Modular configurations: It is easy to configure a simple solution for a small laboratory with a single chromatograph. When your company expands or needs to change, Clarity can grow with you, into a complex solution for any production facility lab with multiple chromatographs operating in a regulated environment.

Simple and economic solution for small laboratories: Small laboratories can benefit from an inexpensive chromatographic solution with an intuitive user interface without the need for extensive training or complicated initial settings. Users with specific demands can easily incorporate the advanced features and customize the software to meet their specific requirements.

Comprehensive solution for demanding chromatography applications: Larger laboratories usually have three main requirements - efficiency, clear organization of workflow, and data sharing. Clarity can easily address all these requirements with a number of tools.

Automation: Clarity enables sequences, batch processing, automated actions triggered from the event table, etc.

Regulated environment: Tools for GLP (such as user accounts, audit trails for system, methods and parameters of directly controlled instruments); and integration (connectivity to wide range of instruments, import and export to multiple formats, LIMS, etc.).

21 CFR
PART 11

Clarity Product Line

It is easy to select a solution from the wide range of possibilities.

All products in the Clarity product line are based on the same core that has been profoundly tested.

This ensures its stability and reliability.



Clarity: Clarity is the most comprehensive of our stations. Its features include data acquisition from multiple instruments, direct control of GCs, LCs and autosamplers using Controls; access to advanced analyses through Extensions; and support of 21 CFR Part 11. This all makes Clarity suitable for laboratories with high demands on efficiency, high sample throughput and GLP standards.



Clarity Lite: Clarity Lite is a simplified version of Clarity that provides data acquisition from one chromatograph (up to four detectors sharing a common time-base). With its reduced set of functions Clarity Lite is an inexpensive solution for a non-regulated environment. Clarity Lite can be easily upgraded at a later date.



Clarity Offline: The offline version allows users to evaluate data and prepare methods. This version cannot acquire data but it can share data or even directly access (through LAN) projects of the two above-described stations. With Clarity Offline users are able to work with acquired data on additional computers in the lab or at home.



Validation: SW tools for seamless Operational Qualification for both analog and digital data detectors are integral part of Clarity Chromatography Software.

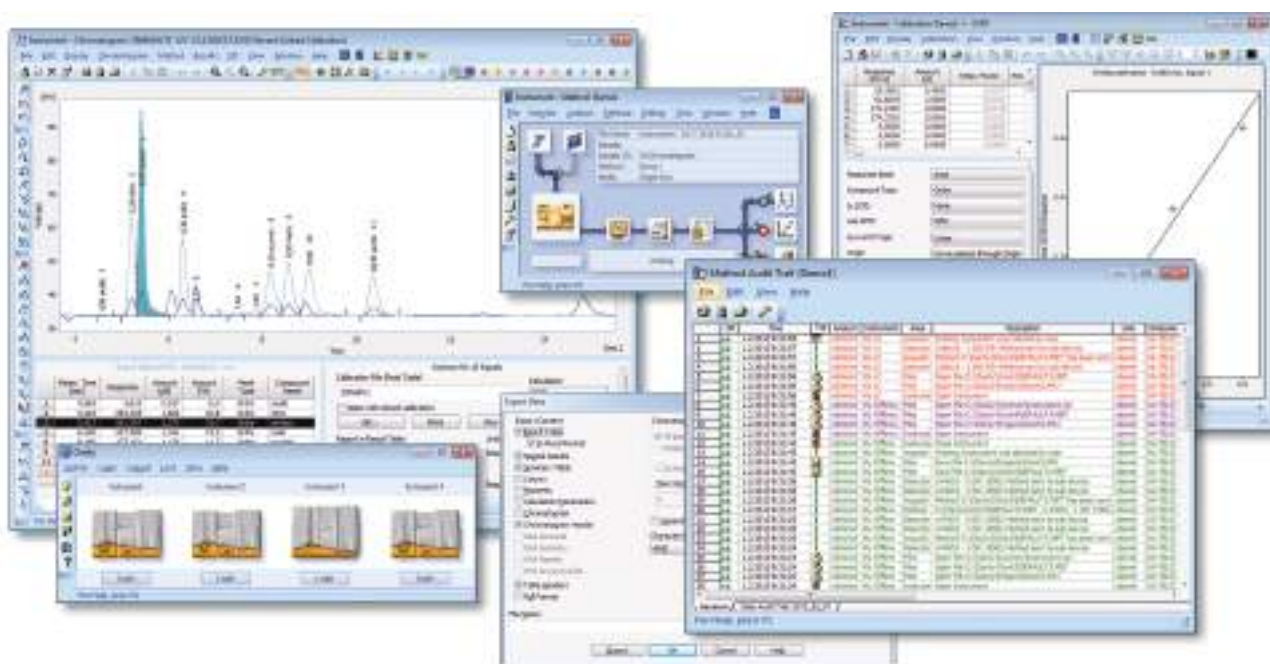
Analog detectors require also a precise peak generator (Validator) that is included in the Validation Kit that can be also used for 3rd party chromatography softwares.



Clarity SDK: The Software Development Kit, for creating custom Control modules for Clarity software, is a set of programming tools with a detailed description of the Clarity Control interface. It is intended for OEM partners to enable development of control modules for their instruments. Use of the SDK requires an advanced command of C++ programming language and MFC libraries.



Clarity OEM: Customize a chromatography station according to your specific requirements. The options range from the simple incorporation of your company name and logo into the Clarity software, all the way up to customizing the entire software to match your specific purposes (CZE, EA, Polarography, Electrochemistry, etc.). Your product will be delivered promptly and with flexible cooperation from our experienced staff.



Clarity Enhancements

Clarity product line includes software Solutions mentioned on the previous page. These can be further supplemented by Extensions, Controls and Hardware.

Clarity Extensions: Software modules that enhance the capabilities of Clarity data station. Extensions provide features within Clarity that are specific to a given type of analysis or for a specific task. Currently available modules are:

GPC: for processing data from Gel Permeation Chromatography

PDA: for spectral data processing

EA: for handling data from Elemental Analyzers

CE: for handling data from a Capillary Electrophoresis systems

SST: for monitoring the accurate function of the chromatography systems

NGA: natural gas analysis calculations

DHA: detailed hydrocarbon analysis calculations

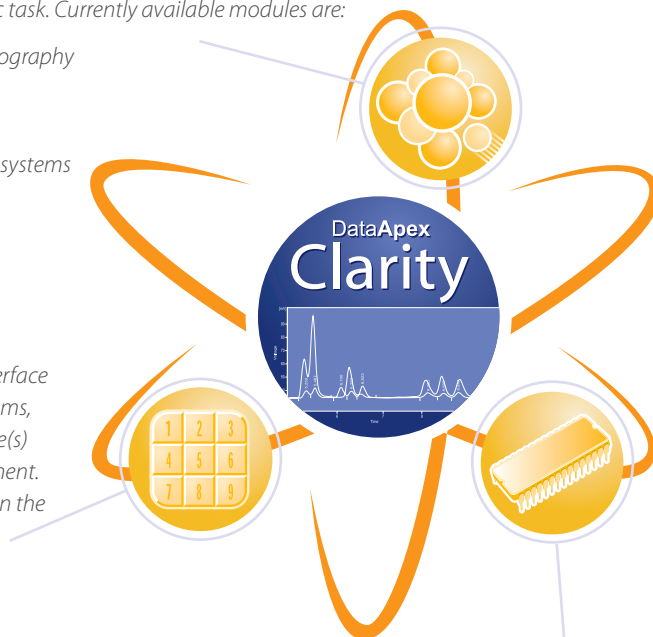
MS: mass spectrometry

Clarity Controls: Software modules that provide an interface with chromatography devices such as GC and HPLC systems, Autosamplers, and Valves. Direct control allows the device(s) to be controlled and monitored from the Clarity environment. The instrument method that controls the device is saved in the measured chromatograms.

A list of currently controlled devices (400+ Instruments) is available at www.dataapex.com.

Hardware: DataApex supplies several types of A/D converters for data acquisition from detectors with analog signal output, control boards for LC control, communication interfaces to controlled instruments, and other optional hardware accessories.

Individual parts are listed in the product catalog at www.dataapex.com.



Clarity Station – extended user support

Lifetime support, free of charge: Clarity software comes with extensive free support from DataApex as well as from the growing community of users in the Clarity Discussion forum. Unlike many large corporations, the DataApex Company is in close contact with its users. Not only do we provide support, but we also consider the suggestions, comments and concerns of our customers the kind of valuable input we need for the further and future development of Clarity.

Regular updates: Regular update releases are free of charge. These minor updates result from our ongoing dialog with customers. They fix small problems and also add enhancements that make working

with Clarity much more convenient. Clarity software can be set to automatically check for available updates.

Try before you buy: A free **Clarity demo** is available for download so you can explore the features available. The demo includes all features of the Clarity software using sample data. A time limited **Clarity Trial**, using your own actual data, is offered for those who want to evaluate the software in real work.

Pre-sales consultations are available for those who have not yet purchased Clarity.

